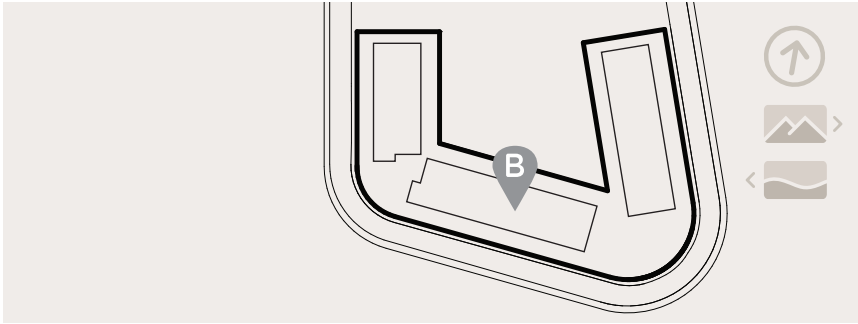


UNIT **A** TYPE

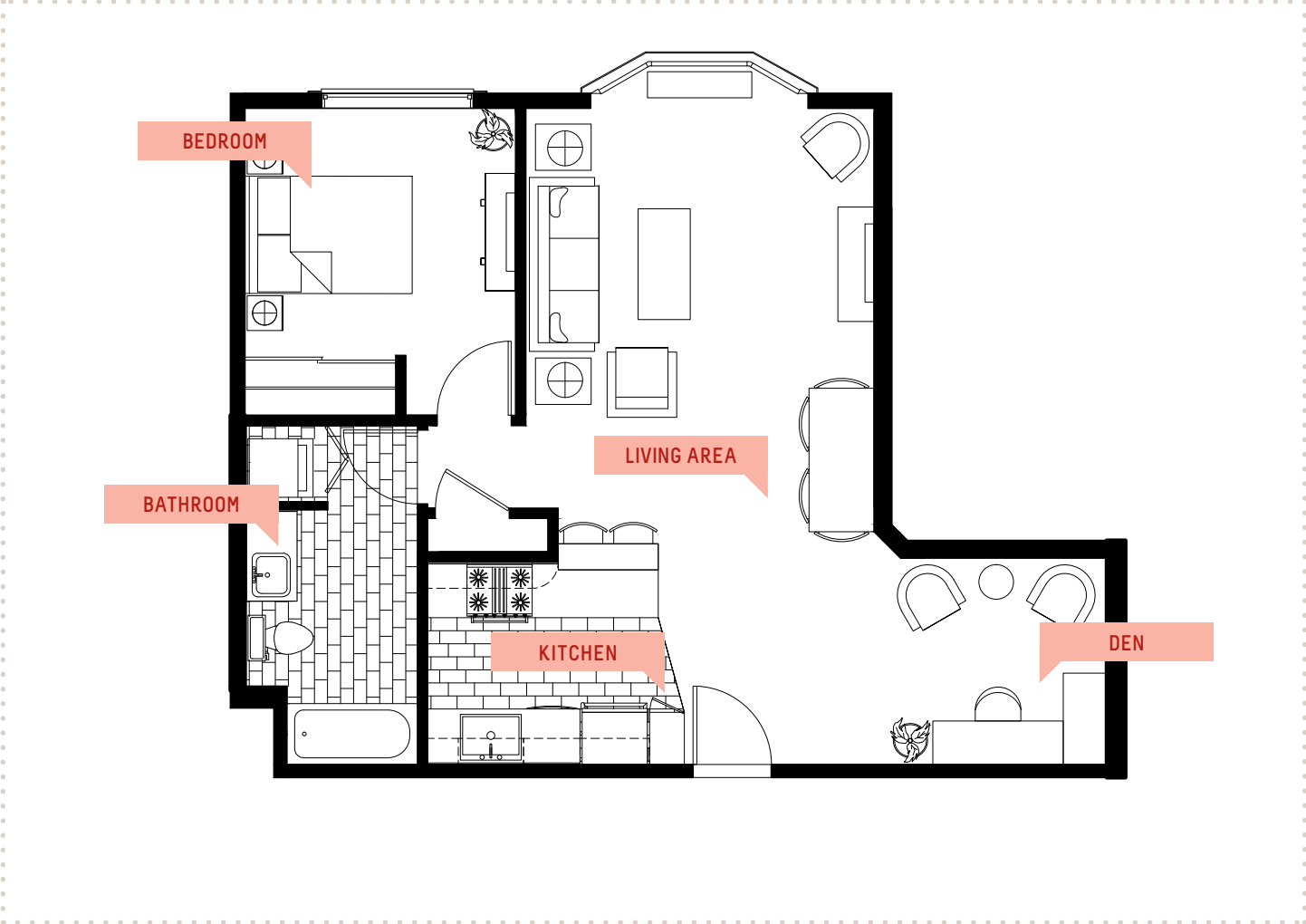
**1**



**683** SQF    **1** BEDROOM    **1** BATH    **DEN** EXTRA

CONFIGURATION AVAILABLE FOR UNITS → →

B314 B414



THE COVE WAIKIKI

1800 KAIOO DRIVE  
HONOLULU, HAWAII 96815

E: SALES@THECOVEWAIKIKI.COM  
T: 808-943-0770 F: 808-943-0772

WWW.THECOVEWAIKIKI.COM

ALL FIGURES, FACTS, AND INFORMATION ARE APPROXIMATE AND ARE SUBJECT TO CHANGE AT ANY TIME. ALL FLOOR PLANS ARE ILLUSTRATIVE ONLY, ARE PROVIDED TO ASSIST THE PURCHASER IN VISUALIZING WHAT THE UNITS AND THE PROJECT MAY LOOK LIKE, MAY NOT ACCURATELY DEPICT THE UNITS OR THE PROJECT, AND MAY BE CHANGED AT ANY TIME. THE FURNITURE AND THE PLANTS SHOWN ON THE FLOOR PLANS OF THE UNITS ARE NOT INCLUDED IN THE UNITS. THE DEVELOPER MAKES NO GUARANTEE, REPRESENTATION OR WARRANTY WHATSOEVER THAT THE UNITS DEPICTED WILL ULTIMATELY APPEAR AS SHOWN. TO THE EXTENT PERMITTED BY LAW, THE DEVELOPER DISCLAIMS ALL LIABILITY THAT MAY ARISE OUT OF ERRORS OR OMISSIONS IN THE CONTENT OF THESE FLOOR PLANS, INCLUDING CLAIMS FOR ACTUAL OR CONSEQUENTIAL DAMAGES.